

**TRADE : FITTER-Sr.**

**MONTHLY TEST : WEEK NO. 17 TO 20**

DATE :

SEAT NO :

**TOTAL MARKS : 100    TIME : 2 Hrs.    PAPER-I**

**TRADE CODE : 453**

**Note : Attempt all the questions. All questions carry equal marks**

**1. Corrosion on rust on ferrous metal is a type --  
 ----- properly.**

- A) Physical
- B) Chemical
- C) Mechanical
- D) None of the above

**2. Corrosion prevention treatments is largely  
 applied to ----- metals.**

- A) Aluminium                      B) Steel
- C) Iron                                D) Iron and Steel

**3. What is the name of process in which  
 aluminium powder is coated on steel to  
 prevent corrosion ?**

- A) Cladding                        B) Sherardising
- C) Calorising                      D) Metal Spraying

**4. Which among the following protective  
 treatment provides a chromiumrich surface  
 ?**

- A) Metal Spraying                B) Electroplating
- C) Calorising                      D) Chromising

**5. Which metal is used as sheating material for  
 underground telephones and power cables ?**

- A) Zinc                                B) Aluminium
- C) Lead                               D) Copper

**6. Which one among the following coating is  
 not a type of cementation ?**

- A) Sherardising
- B) Calorising
- C) Cladding
- D) Chromising

**7. This metal is used for chemical plants and  
 food processing equipment -----.**

- A) Stainless Steel
- B) Tin
- C) Copper
- D) Nickel

**8. ----- alloyed with copper in the  
 proportion of 2 : 1 'Money Metal' is produced**

- A) Aluminium                      B) Chromium
- C) Stainless Steel                D) Nickel

**9. Identify a transparent coating applied on  
 cutting tools and measuring instruments to  
 prevent from corrosion.**

- A) Electroplating                B) Tinning
- C) Galvanizing                    D) Lacquering

**10. Which one of the following metal is an  
 excellent exterior building material which is  
 used for coating on steel ?**

- A) Zinc                                B) Copper
- C) Chromium                      D) Nickel

**11. While electroplating ' Negative Pole' of D.C.  
 electric supply is connected to -----.**

- A) Eletrolyte                        B) Cathode
- C) Anode                              D) Any one of the above

**12. In which of the following anti-corrosive  
 treatment the plating is performed by  
 electrically ?**

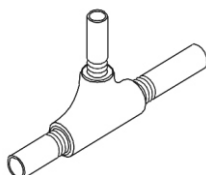
- A) Eletroplating                B) Galvanising
- C) Sherardising                D) Chromising

**13. What is the position of eccentric reducers are used in pipe lines?**

- A) Vertical position
- B) Angular position
- C) Radius position
- D) Horizontal position

**14. What is the name of the pipe fitting?**

- A) Tee joint
- B) Eccentric reducer
- C) Reducer tee joint
- D) Concentric reducer



**15. Which type of pipe joint take branch at 90°?**

- A) Coupling
- B) Tee branch
- C) Eccentric reducer
- D) Concentric reducer

**16. Which pipe fitting is used to divert the flow direction of pipe?**

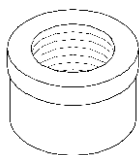
- A) Union
- B) Plug
- C) Elbow
- D) Coupling

**17. What is the pipe fitting the 90° and the branches may be equal in diameter?**

- A) Tee joint
- B) Elbow joint
- C) Coupling joint
- D) Union joint

**18. What is the pipe fitting?**

- A) Reducer
- B) Nipple
- C) Cap
- D) Plug



**19. What is the radius size for long radius elbow?**

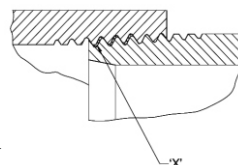
- A) Equal the bore the pipe
- B) 1 ½ times bore of the pipe
- C) Elbow 3 time bore of the pipe
- D) 2 times bore of the pipe

**20. Which is used to divert at 45° in pipeline?**

- A) Bend
- B) Elbow
- C) Reducer
- D) Branch

**21. What is the name of part marked 'x' in the pipe joint?**

- A) Outer pipe
- B) Hemp packing
- C) Tapered male thread
- D) Parallel female thread



**22. What type of fitting is used in pipeline to connect two pipes of external threads?**

- A) Reducer
- B) Coupling
- C) Cap
- D) Nipple

**23. The included angle of a pipe thread is -----.**

- A) 45°
- B) 55°
- C) 90°
- D) 30°

**24. In pipe line elbows/bends are used to -----.**

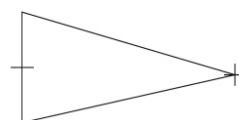
- A) Provide deviation to pipe at 90° and 45°
- B) Provide branch at 90° pipe line
- C) To change the pipe diameter
- D) To close the pipe and

**25. In pipe line pipe with external thread is to be closed at end which of the following pipe fitting should be used ?**

- A) Coupling
- B) Plug
- C) Reducer
- D) Cap

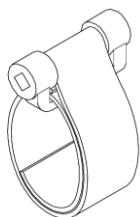
**26. Name the pipe line symbol.**

- A) Socket
- B) Plug or cap
- C) Union screwed
- D) Reducer concentric



**27. What is the type of wrench?**

- A) Footprint wrench
- B) Strap wrench
- C) Chain pipe wrench
- D) Pipe wrench



**28. Which type of wrench is used on finished tubular surface?**

- A) Strap wrench
- B) Foot point wrench
- C) Chain pipe wrench
- D) Stillson pipe wrench

**29. Foot print wrench is used for -----.**

- A) Pipe or rods up to 50 mm dia
- B) Gripping irregular surfaces
- C) Finished, polished or plated surfaces
- D) Inconfined places

**30. Strap wrench is used for -----.**

- A) Pipe or rods upto 50 mm dia
- B) Gripping irregular surfaces
- C) Finished, polished or plated surfaces
- D) Inconfined places

**31. Benefits of harvesting -----.**

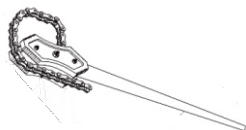
- A) Ground water table raise
- B) Reduce the sainity
- C) Avoid flooding
- D) All of the above

**32. Which is the correct method of rain water harvesting?**

- A) Precolators/soak pit
- B) Precolation trenches
- C) Service well cum recharge well method
- D) All of the above

**33. What is the name of the plumber tool?**

- A) Strap wrench
- B) Chain pipe wrench
- C) Still son pipe wrench
- D) Foot point pipe wrench



**34. Which pipe wrench is used on finished tubular surface to avoid marking or damaging?**

- A) Pipe wrench
- B) Chain pipe wrench
- C) Strap wrench
- D) Foot print wrench

**35. Long radius elbows have radius equal to -----.**

- A) 1 ½ times of the bore of the pipe
- B) 1 ¼ times of the bore of the pipe
- C) 1.25 times of the bore of the pipe
- D) 1 times of the bore of the pipe

**36. Short radius elbows have a radius -----.**

- A) 1 ½ times of the bore of the pipe
- B) 1 ¼ times of the bore of the pipe
- C) 1.25 times of the bore of the pipe
- D) Equal times of the bore of the pipe

**37. Which pipe vice is used for holding larger diameter pipes up to 200 mm diameter?**

- A) Chain pipe vice
- B) Bench vice
- C) Portable folding pipe vice
- D) Machine vice

**38. Bench type hand operated pipe bending machine is used for -----.**

- A) Conduit pipes
- B) P.V.C. pipes
- C) G.I. pipes and steel pipes
- D) Copper tubes

**39. In pipe bending selection of inner former depends upon -----.**

- A) Outside diameter of pipe
- B) Material of pipe
- C) Inner diameter of pipe
- D) Thickness of pipe

**40. Which valve is used to permit fluid flow in one direction only?**

- A) Plug-cock
- B) Needle valve
- C) Non-return valve
- D) Pressure regulator valve

**41. How the water flow is stopped from the valve around the stuffing box?**

- A) Replace the spindle
- B) Tightening the bonnet
- C) Tightening the hand wheel
- D) Packing with asbestos hemp

**42. Which valve is used to control flow and is only kept in either open or closed position?**

- A) Gate valve
- B) Globe valve
- C) Needle valve
- D) Non-return valve

**43. What is the cause of water dripping from the tap even after closed?**

- A) Defective washer
- B) Spindle thread worn out
- C) Bend spindle
- D) Loose valve

**44. What is the remedial measure for house hold water tap water flowing or dripping from the tap even after firmly closed?**

- A) Replace washer    B) Tighten stuffing box
- C) Renew tap spinde    D) Replace the tap

**45. What is the remedy if the spindle rotates continuously so that the gate valve is not closed?**

- A) Replace the valve
- B) Tighten the gland nut
- C) Replace the worn out part
- D) Renew the gland packing

**46. Which valve should not be used to regulate the flow ?**

- A) Globe Valve
- B) Gate Valve
- C) Check Valve
- D) Needle Valve

**47. Which valve provide unobstructed water flow so it is used in large pipelines ?**

- A) Globe Valve
- B) Gate Valve
- C) Check Valve
- D) Needle Valve

**48. This valve is used to obtain a fine degree of control over the flow**

- A) Globe Valve
- B) Gate Valve
- C) Check Valve
- D) Needle Valve

**49. Why the non-return valve (check valve) are used in pipe line ?**

- A) To regulate the flow
- B) To regulate the pressure
- C) To avoid back pressure
- D) To obtain fine degree of control over flow

**50. Why the needle valve are used in pipe line ?**

- A) To regulate the flow
- B) To regulate the pressure
- C) To avoid back pressure
- D) To obtain fine degree of control over flow

**SCAN ME**



[www.visionprakashan.com](http://www.visionprakashan.com)

**Month -05**

New Syllabus \_2022

**Sector : Capital Goods And Manufacturing**  
**Annual Pattern 2nd Year NSQF Level- 4**  
**INDUSTRIAL TRAINING INSTITUTE**

**5.1****TRADE : FITTER-Sr.****MONTHLY TEST : WEEK NO. 17 TO 20**DATE : **PAPER-I**TRADE CODE : **453****TOTAL MARKS : 100****ANSWER KEY****Note : Attempt all the questions. All questions carry equal marks**

Q.No.	ANS
1	<b>B</b>
2	<b>D</b>
3	<b>C</b>
4	<b>D</b>
5	<b>C</b>
6	<b>C</b>
7	<b>A</b>
8	<b>D</b>
9	<b>D</b>
10	<b>A</b>
11	<b>B</b>
12	<b>A</b>
13	<b>D</b>
14	<b>C</b>
15	<b>B</b>
16	<b>C</b>
17	<b>A</b>
18	<b>C</b>
19	<b>B</b>
20	<b>A</b>
21	<b>B</b>
22	<b>B</b>
23	<b>B</b>
24	<b>A</b>
25	<b>D</b>

Q.No.	ANS
26	<b>D</b>
27	<b>B</b>
28	<b>A</b>
29	<b>D</b>
30	<b>C</b>
31	<b>D</b>
32	<b>D</b>
33	<b>B</b>
34	<b>C</b>
35	<b>A</b>
36	<b>D</b>
37	<b>A</b>
38	<b>C</b>
39	<b>A</b>
40	<b>C</b>
41	<b>D</b>
42	<b>A</b>
43	<b>A</b>
44	<b>A</b>
45	<b>C</b>
46	<b>B</b>
47	<b>B</b>
48	<b>D</b>
49	<b>C</b>
50	<b>D</b>